

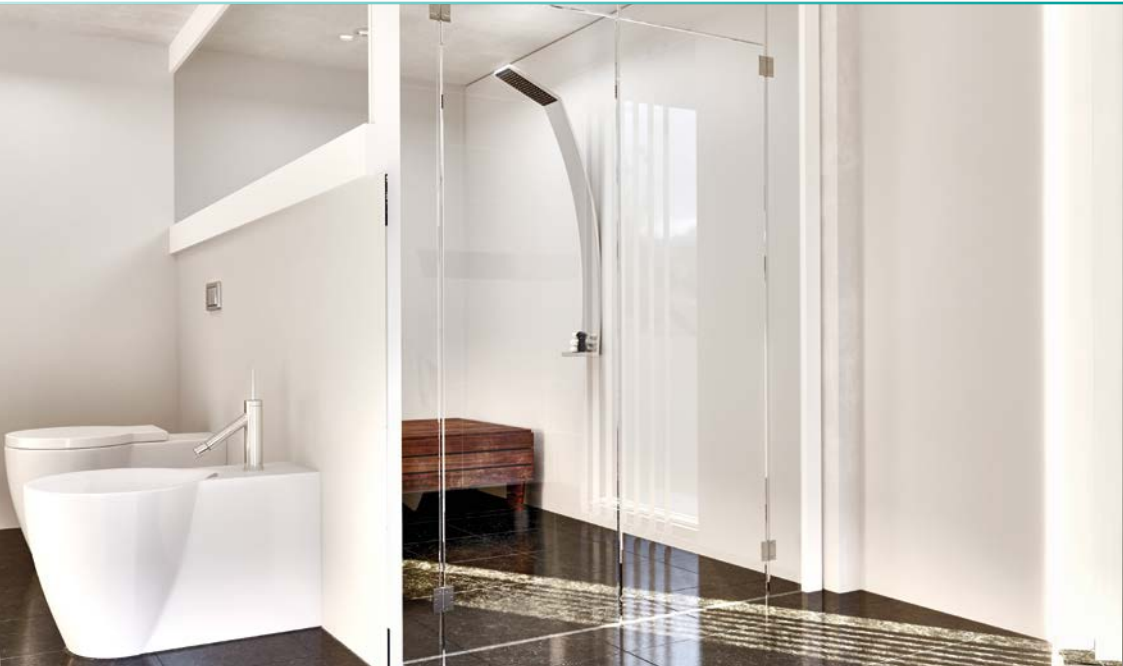


**SEE IT. TOUCH IT. FEEL IT.**

Individual and high-quality surface finishing  
**THE SPECIALIST FOR THE KLEIBERIT HOTCOATING<sup>®</sup> TECHNOLOGY**

2 **See it. Touch it. Feel it.**  
The right surface for you.

**Shining the spotlight**



Kitchens, living rooms, bathrooms and bathroom refurbishments, facades, fire protection projects, trade fairs, etc. dekoraPUR offers you state-of-the-art finishing options for surfaces of unrivalled quality.

**Surface finishing for producers and furniture manufacturers, interior designers, shopfitters, and your own individual projects.**

**on your projects**



4

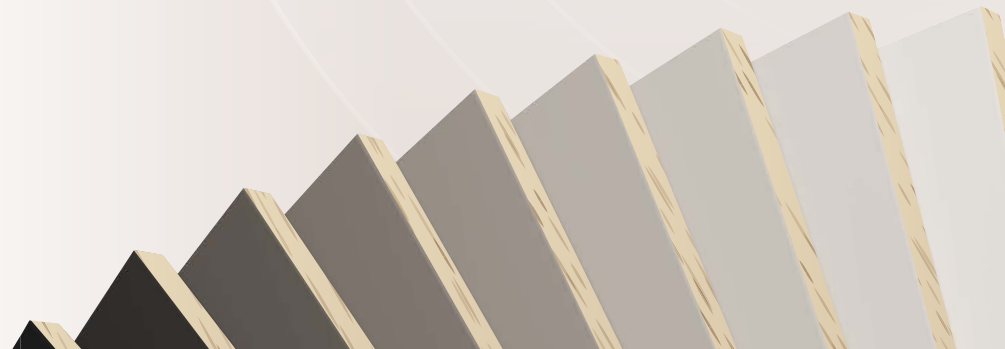
## dekoraPUR

Innovations included.

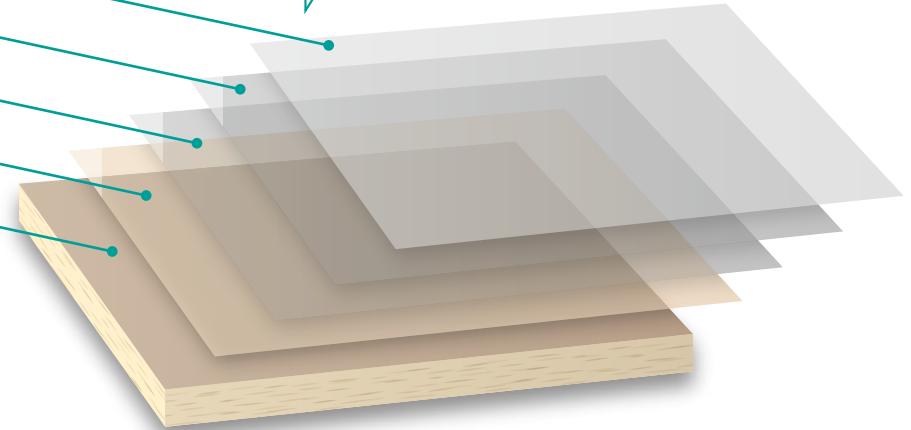
Choose from a selection of widely combinable features and functions to suit your exact needs.

Current new developments are giving rise to additional functional options.

## Carrier boards + functions



**KLEIBERIT HotCoating®** technology



**= dekoraPUR**

KLEIBERIT HotCoating® technology enables very high color precision, impressive depth effects, super smooth haptics, high quality glossy finishes, and excellent resistance to scratches and impact. Above all, it has impressive processing properties in terms of drilling, milling and sawing the finished products, due to the outstanding chemical adhesion and flexibility of HotCoating.



**Features**

- High-quality varnished surfaces
- Scratch-resistant
- Anti-fingerprint
- FSC®- and PEFC-certified
- UV-resistant – suitable for outdoor use (optional)
- Water-resistant – suitable for wet rooms (optional)
- Antibacterial – easy to clean, e.g. in kitchens, bathrooms and clinical area (optional)
- Digital printing (optional)
- Fire protection (optional)
- Magnetic (optional)

**Carrier boards**

Chipboard, MDF, HPL, fire protection boards, etc.  
 Almost any type of carrier board can be finished with dekoraPUR's innovative functional coating.

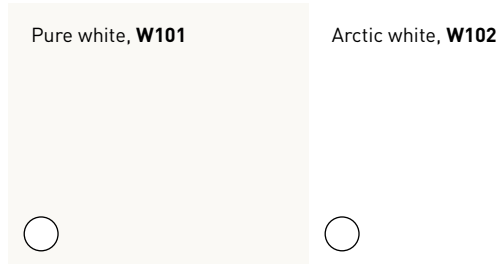


# Product range.



## pure.piano.gloss

High-gloss elements in high-end quality



Choose from a wide range of decors and surfaces.

Standard sizes for MDF and chipboards:  
2,800 mm × 1,250 mm × 18 mm.

Additional sizes and board thicknesses upon request. Please enquire for delivery times.

For colour-coordinated Rehau ABS edgebands, see Rehau's edgeband search service:  
[https://designguide.rehau.com/GB\\_en/](https://designguide.rehau.com/GB_en/)



## pure.brilliant.gloss

Brilliantly reflecting surfaces





## pure.super.matt

Super matt solutions with a super smooth feel

Pure white, <b>W101</b>	Arctic white, <b>W102</b>	Snow, <b>W106</b>
○	○	○
Vanilla, <b>M103</b>	White, <b>W104</b>	Stone grey, <b>G109</b>
⊞	○	⊞
Marengo grey, <b>G108</b>	Dark grey, <b>G101</b>	
⊞	⊞	

○ Back: melamine, white

⊞ Back: same decor as front



## pure.perfect.matt

Consistent surface appearance, regardless of viewing angle

Cotton, <b>W125</b>	Pure white, <b>W101</b>	Icy white, <b>W103</b>
○	○	○
Cacao, <b>C101</b>	Olive, <b>D113</b>	Vanilla, <b>M103</b>
○	⊞	⊞
Dark grey, <b>G101</b>	Stone grey, <b>G109</b>	Light grey, <b>G119</b>
⊞	⊞	○
Quartz grey, <b>G122</b>	Pure black, <b>B101</b>	
⊞	⊞	



8

# dekoraPUR GmbH

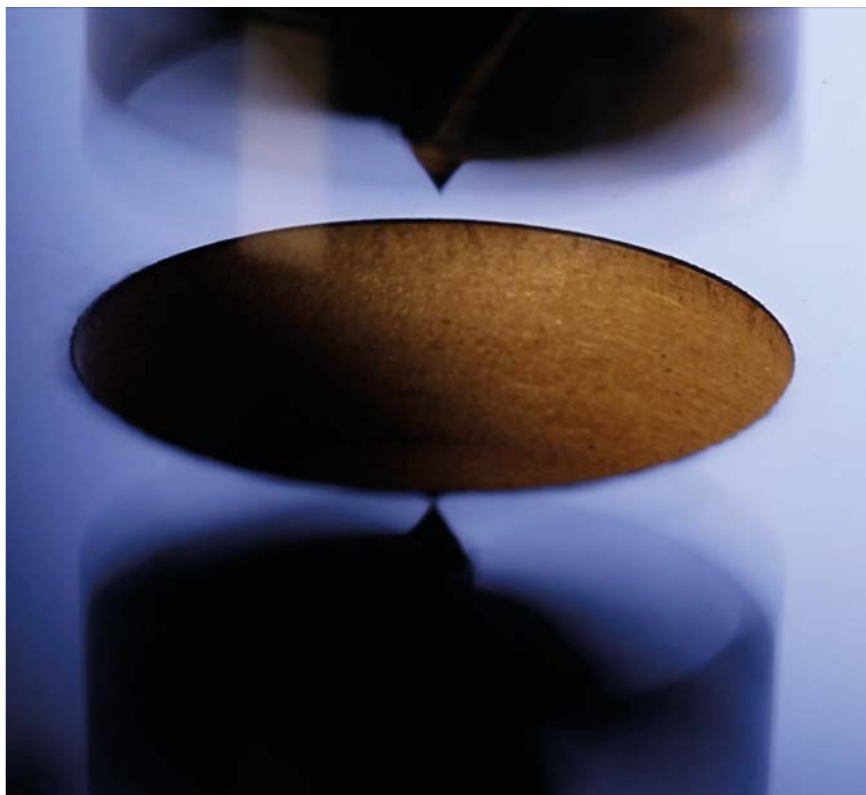
## Top quality, innovative products and customer-oriented service

The company manufactures and distributes high-gloss and super matt elements for the entire furniture and supplier industry, for architects, interior designers, designers, exhibition stand builders, shop system builders, the construction and facade industry as well as for handicraft interior finishing.

The technological basis is the internationally successful and sustainable KLEIBERIT HotCoating® process, which was developed by KLEIBERIT SE & Co. KG. Leonhard Ritzhaupt, CEO at KLEIBERIT, sees the HotCoating line in Barsinghausen as a reference for KLEIBERIT which, in cooperation with international experts and prospective buyers, helps promote the technology and raise the quality benchmarks over other coating and lacquering methods.







## Our service is your profit

We finish almost all materials, whether MDF and chipboard, composites, metals, plastics, etc. We also offer you specific, individually defined solutions such as exact and constant colour settings, flexible cuts, matching edgings and prefabricated elements.

In our showroom, we are pleased to present our large selection of decors and to show you the advantages of KLEIBERIT HotCoating® surfaces in terms of processing, sustainability and quality.



10 **PURe expertise in surface finishing –**  
with KLEIBERIT HotCoating® technology.



Cross cut testing



Adhesion testing



Colour shade testing



Gloss level testing

Years of extensive research and development and decades of experience with reactive PUR-adhesive-systems form the cornerstones of the KLEIBERIT HotCoating® technology and its international success. Today, it is used all over the world to finish and coat millions of square metres of furniture, flooring and facade elements.



Chemical testing



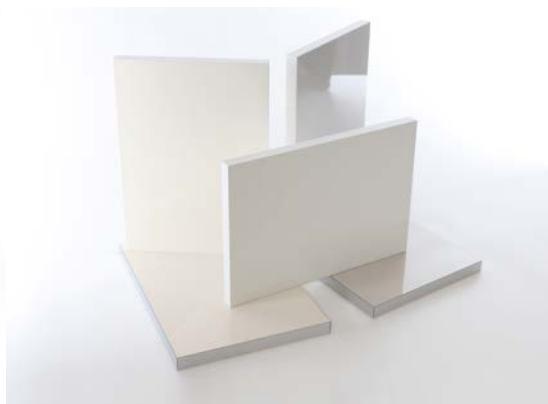
Fire protection testing



Environmental conditions testing



No white fracture/mouse tooth effect





The mark of  
responsible forestry



**ALL PRODUCTS ARE AVAILABLE IN FSC<sup>®</sup>- AND PEFC-CERTIFIED QUALITY.**

dekoraPUR GmbH  
Spielburg 11  
30890 Barsinghausen / Germany  
Phone +49 5035 9789690  
info@dekoraPUR.com  
www.dekoraPUR.com

Individual and high-quality surface finishing  
**THE SPECIALIST FOR THE KLEIBERIT HOTCOATING<sup>®</sup> TECHNOLOGY**